

**Campaigning all-year-round for local people !**

# “FOCUS” Celebrates 100 not out !

**Martin Kyrle reports:** I was Local Party constituency chairman and had been publishing “Focus” newsletters in Chandler’s Ford for 10 years when, in October 1980, I was drafted in to fight a by-election in West End – and won! West End Liberal Party had never even put up a candidate before, let alone had a councillor. When I attended my first parish council meeting to report back on borough council matters I was, as the saying goes, like a fish out of water – every other councillor at every level was a conservative, and I got the clear impression they thought that my election was just a fluke.

It was no fluke, the following year the Party won the county council seat with Gary Aplin, Dr Claude Bamber joined me on the borough in 1982 and then in 1983 Don Horne became our third borough councillor, I then successfully defended my seat and in the elections for the 12 seats on the parish council we won ten. Since that first win 25 years ago most of West End’s councillors have been Liberal Democrats.

The “Focus” files reflect our local history and many successful campaigns, e.g. saving the Old Fire Station (now our local museum), preventing thousands of houses being built up Allington Lane and, in the teeth of Conservative ridicule, getting biographical details put on street nameplates honouring local residents and a public memorial erected to West End’s most famous son, Richard St Barbe Baker, on the corner of High St and Chapel Road.



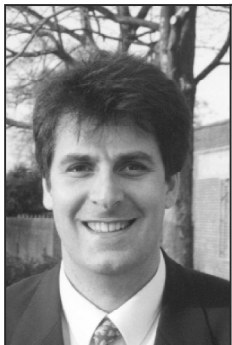
●Martin Kyrle at the unvailling of the Barbe Baker Memorial

## Can you help the Focus team ?

**David Goodall reports:** The Focus is delivered free by a team of volunteers. However there is always a turnover of people able to deliver. The Focus enables Liberal Democrats in West End to give regular information to the residents, not only at election times but throughout the year.

The size of a focus round varies, however a typical round is between 50 and 100 houses and takes between 30 minutes and one hour. So if you wish to help us deliver Focus by doing a round and can spare the time every 2 or 3 months, could you please contact me - on (023) 8047 6139.

Thanks for reading this far down the page.



# WEST END FOCUS



2005  
Special  
Edition

Your Number One REGULAR Newsletter

Editor : Cllr David Goodall

## Help for the Visually Impaired



●Carol Boulton presents the cheque to Librarian Mandy Axtell with West End Visually Impaired Group

### In this Issue

Help For the  
Visually  
Impaired

Ton Up

“FOCUS”  
Celebrates  
100 Not Out

Can you help  
the Focus  
Team ?

### Ton Up

This special edition is to celebrate the fact that for a 100 regular issues Focus has been publishing to the people of West End.

Since it began the Focus team has not just published the regular Focus issues in between elections but also numerous election specials.

Our aim is to try and keep in touch with the community we serve and to give the community as much opportunity as possible to say what we can do to help them all year round not just at election times.

On the back is an article from former editor Martin Kyrle saying how it all started 25 years ago.

There is also one from me saying how you could help us continue this service to the community.

*David Goodall*

**Cllr Carol Boulton reports:** I was very pleased to present a cheque for £2,500 from Eastleigh Borough Council ‘s Hedge End West End and Botley Local Area Committee to West End Visually Impaired Group.

The group is a recently established one and it seeks to improve access to the library for many of West End residents who need books with large print or ‘talking books’.

The group will work with Mandy Axtell, who is the County Council’s Librarian with special responsibilities for ‘Equal Access’ to select talking books and tapes for stock improvement at West End library.

It is important that all groups of people have access this important resource for learning and leisure.